

DESCRIPTION

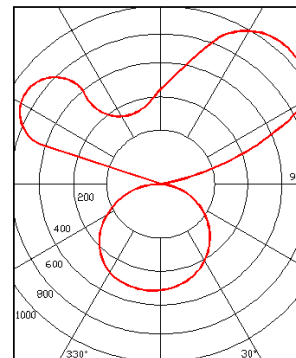
The L250 Wall luminaire is a low-profile, lensed compliment to the L200 linear pendant. Configured for either individual or continuous runs, the versatile L250 Wall is designed with clean, straight lines making it a great choice for your lighting projects in open and private offices, educational facilities, retail, or other applications.

SPECIFICATIONS

Housing:	20 gauge cold-rolled steel construction
Lengths:	4' and 8' fixtures that can also be joined for continuous rows
Finish:	Durable, low gloss, textured powder coated finish
End Caps:	Flat end cap provides a clean finish
Approvals:	UL/CUL
LED Engine:	Dimming driver and LED board combination
Optional Drivers:	Lutron, Osram, EldoLED and other options available
Distribution:	Standard 70/30 with optional distributions available
Optic:	Frosted lens creates a smooth downlight feature
Output Package:	Super saver and high output lumen levels available
Sensor:	Optional integrated daylight or occupancy sensors
LED Color:	Available color temperatures of 3000k, 3500k, and 4000k
Mounting:	Wall brackets included with fixture (2 per 4' or 3 per 8')
Battery:	Optional 12 watt constant power emergency battery
CRI:	82+
I.E.S. Data:	Available upon request
Warranty:	5-Year limited warranty

PHOTOMETRICS

* Measurements based on High level output



70/30 – Standard
 3840 lumens
 82% up - 18% down
 105 lm/W

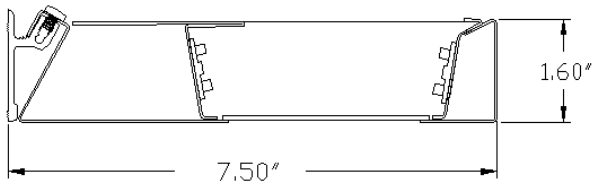


FIXTURE OPTIONS

Ordering Example: L250W-4-30-120-HO-WHT

FIXTURE SERIES	LENGTH	LED COLOR	VOLTAGE	OUTPUT	DISTRIBUTION TYPE	EMERGENCY CIRCUIT	FINISH	INTEGRATED SENSOR	OPTIONS	
L250W Lens	4	30 3000k	MVO 120-277v	SS Super Saver	Blank Standard	Blank None	WHT	Blank None	Blank None	
	8	35 3500k	120 120v	HO High Output		EF Separate individual emergency feed		* Consult factory for custom colors	DAY Daylight	FF Fast blow fuse
		40 4000k	277 277v			EHF Emergency through wiring with separate feed			OCC Occupancy	FS Slow blow fuse
		50 5000k	347 347v			EHS Emergency through wiring single feed with shared neutral				EB Emergency battery
								* Consult factory for Lutron, ELdoLED, Osram, or other drivers		

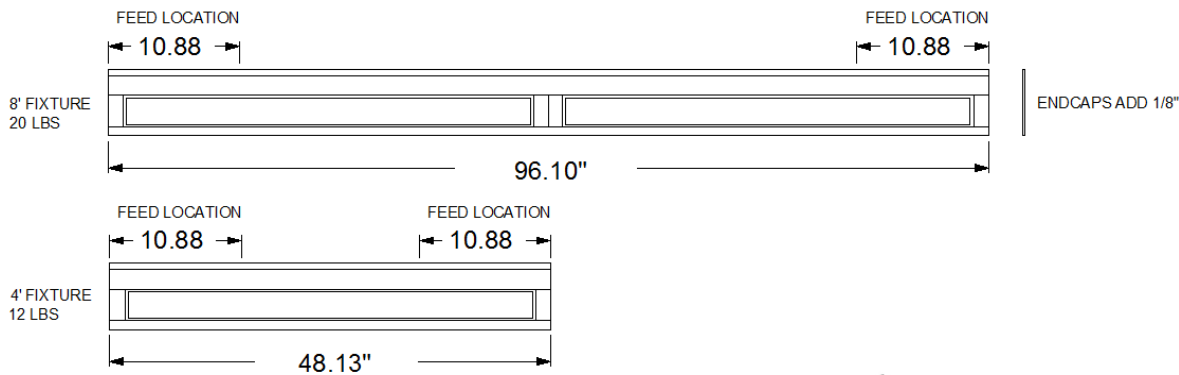
* END CAP KIT: L250W -WHT (One kit required per fixture run)



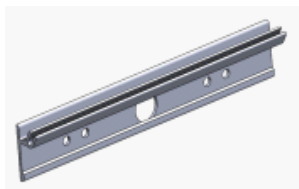
4' Output Package	Lumens	Watts	Lumens/Watt
Super Saver (SS)	2672	25.5	105
High (HO)	3840	37	104

* Based on 4000k

MOUNTING SUPPORT LENGTHS



MOUNTING HARDWARE



WALL BRACKETS INCLUDED

